



Housing Insecurity

What you should do

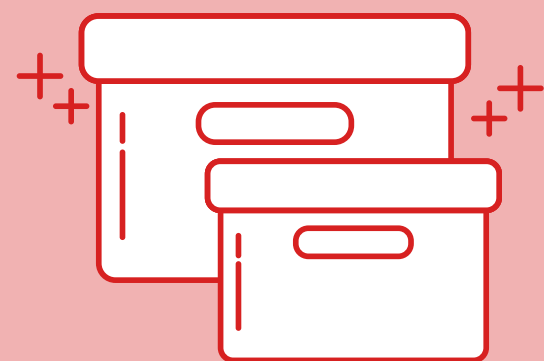
TRADITIONAL

Participate in Housing Selection

(application-based or General Room Selection)

Move into summer housing

You will move into your housing for the next academic year once it's available



Over winter break, you may need to move into temporary on-campus housing



LONG-TERM

Petition to move into a long term housing unit

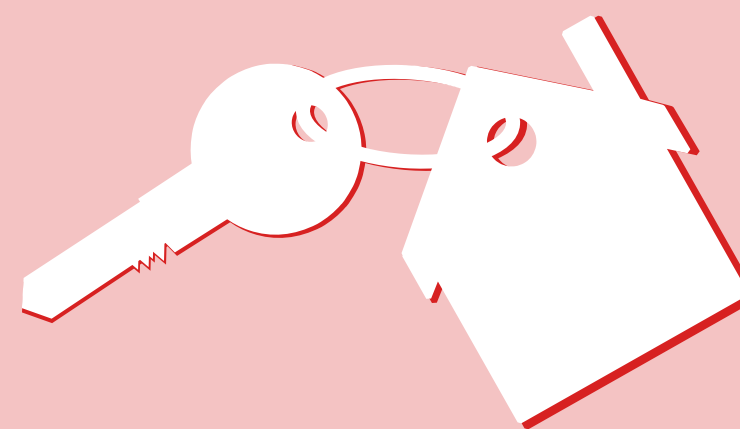
(Woodframe/Apt)

by the time spring break begins

You will be notified of when during the summer you can move into your long-term housing unit!

You can then stay in that housing for the duration of your time at Wesleyan

If maintenance must be performed, you will be provided temporary housing



In January, ResLife will send you an email to check in!